

# Community Engagement Panel

**Caressa White, MA UNC CFAR - Moderator**

## **Panelists**

**Edward Jackson, Community Engagement Coordinator, UAB CFAR**

**Emily Feher, MPH, Director Teen Health Mississippi, Mississippi/Prov/Brown CFAR**

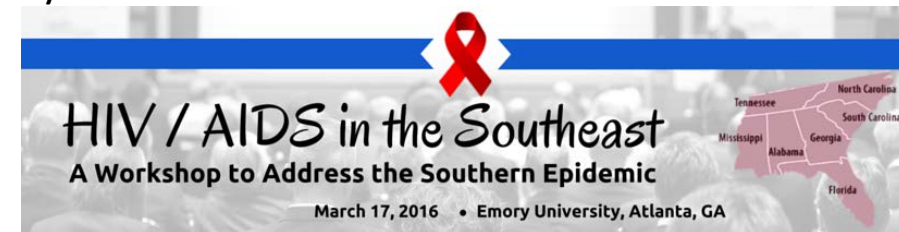
**Terry Munn, CEO Triangle Empowerment Center, Duke CFAR**



# 2016 COMMUNITY ENGAGEMENT OUTCOMES

## Build - Grow - Measure

1. How do we build our "community engagement family" across CFAR's? A number of CFARs have community engagement coordinators, systems for engaging community health advisors, and other best practices.
2. How do we take care of our community engagement family network? How do we ensure we are providing the necessary supports for our community engagement team?
3. What are the metrics for community engagement?
  - I. How do we define and document community engagement staff's effort/time in community engagement?
  - II. Research should reflect local community values. Does it? Did we solicit normative feedback?
  - III. Providing financial support to community partners
  - IV. Process indicators
    - a. engaging community in developing research questions, data analysis, interpretation. Having community members as Col's, co-authors.
    - b. did we ask community how to develop solutions
    - c. do our investigators reflect the ethnical/racial backgrounds of community?





# What Is Community Engagement?

- A strategy to build trust between researchers and the populations asked to participate in studies
- Elicits feedback, advice, criticism from communities about their attitudes and perceptions of research
- Shows sensitivity, respect and appreciation
- Involves Co-learning
- Exchanges of value to the community being studied (improved health, education, capacity, or policy)



# Why is Community Engagement Important?

## For Researchers

- New perspectives on community interests and values
- Can improve the quality, relevance, and impact of research
  - Improved study design and methods
  - Higher recruitment and retention of study participants
  - Produces more valid and meaningful results
- Increasingly recognized by NIH, CDC as important

## For Communities

- Can make technical assistance and educational resources available to residents and community organizations
- Assistance advocating for policies to improve community health

## UAB CFAR FAITH AND SPIRITUALITY NETWORK (FSN) COMMUNITY ENGAGEMENT ACTIVITIES

- Coordinated and supported numerous research and community based meetings, seminars, and collaborations on HIV and faith and spirituality
- Developed a network of undergraduate and graduate students interested in conducting research in HIV and faith and spirituality
- Sponsored The Social Justice Imperative Birmingham Faith Leader Town Hall: “Moving Faith from Awareness to Engagement to Ending HIV” with The Black and HIV, an NAACP Clinton Global Health Initiative
- Conducted a Community Forum on Faith and Spirituality: “Ideas, Opportunities, and New Directions for Faith-Based Community HIV Initiatives: Bringing Together Researchers and the Community”
- Partnering with faith based community on HIV educational trainings
- Coordinating with the Inter-CFAR Faith and Spirituality Network Research and Planning Workgroups

# University of Alabama at Birmingham (UAB) CFAR Community Engagement Synergy & Activities

- 10 HIV educational trainings
- 15 Research consultations
- 60 community outreach contacts
- Total of over 120 events/meetings contributing to community engagement activities
- The Social and Behavioral Sciences Research Network (SBSRN) conference
- The National CFAR CAB Coalition (NCCC) conference
- The HIV/AIDS in the Southeast conference @ Emory University
- The Inter-CFAR Faith Initiative Working Group (FIWG) symposium
- Community Engagement Institute Conference
- Administrative Core: Activities included Core J's role in the External Advisory Board Review and CFAR Executive Committee, collaborative work on planning and hosting the Inter-CFAR Joint Symposium on HIV Research in Women

## UAB CFAR FAITH AND SPIRITUALITY NETWORK (FSN) COMMUNITY ENGAGEMENT ACTIVITIES

The **Faith and Spirituality Network (FSN)** held multiple planning meetings, which led to a major event, **Moving Faith from Awareness - to Engagement - to Ending HIV**. Following this, we organized the **September 2016 Panel - Faith and Spirituality Panel "Ideas, opportunities, and new directions for faith-based community HIV initiatives: Bringing together researchers and the community,"** featuring expert panelists from community and university settings. Our FSN started collaborating with the 9<sup>th</sup> District AME Church to implement 5 regionally-based 3-hour HIV trainings with 275+ clergy and faith leaders with over 20,000 congregants in the 9<sup>th</sup> District of Alabama. We are conducting pre- and post-assessments at the trainings with clergy and officer leaders on their HIV knowledge, perceptions, beliefs, demographics, and current HIV faith initiatives and planned initiatives (co-sponsored by the UAB Center for the Study of Community Health).

**Inter-CFAR Faith Initiative Conference**

**March 28-29, 2017**

**Rochester, New York**

**Strahallan Hotel**

Connect with the CFAR Faith and Spirituality Network  
Edward Jackson      Robin Lanzi  
(205) 603-7542      (205) 975-8071  
ecjackson2@uabmc.edu      rlanzi@uab.edu



**CEO:** Terry Munn, MSW

**Executive Director:** Miguel Hunter, Certified HIV/AIDS  
Counselor, Clinical HIV Case Manager

**Men's Outreach Coordinator:** Earl Bradley

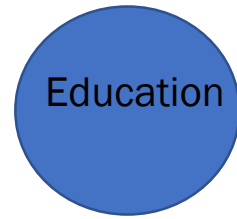
**Women's Outreach Coordinator:** Rita McDaniel

**Transgender Health Program Advisor:**

Kimora Brooks

**Counselor/Therapist:** Patrice Gould-Hatwood, ABD, MS  
Counseling and Psychology





# Programs



- **Mclub Outreach** (MSM- 16-29)
- **It's All About Me** (CDC Voices, women's empowerment)
- **Love the Glove Project** (Condom distribution for businesses)
- **Non-traditional testing street outreach**  
(Raleigh and Durham)
- **PrEP Navigation**
- **Private In-Home Testing**
- **Ground-Up Housing Solutions**
- ✕ **ARTAS**(Anti-Retroviral Treatment and Access to Services)- CDC intervention **linkage-to-care** case management
- ✕ **Ladies of the T** (Transgender)
- ✕ **G.E.P.** (Giving Empowerment and Positivity)- HIV Positive Men Empowerment
- ✕ **S.L.S.** (Seasoned to Live Strong Social Group)- MSM 30+
- ✕ **NC SOAR** (SSI/SSDI Outreach Access Recovery)-Linkage to care, SSI/SSDI benefits



# Community based research protocol

## Community Collaboration and Participation in Research Initiatives:

- Proposal Review
- Approval Process
- Dissemination of Findings



# Youth Engagement for Policy Change

## Introduction

- Emily Feher, MPH—Director of Teen Health Mississippi
- Mississippi First



## Youth Partnership framework





# Process Mapping with Youth and Healthcare Staff as a Promising Approach to Enhancing Youth-Friendly Sexual and Reproductive Health Care

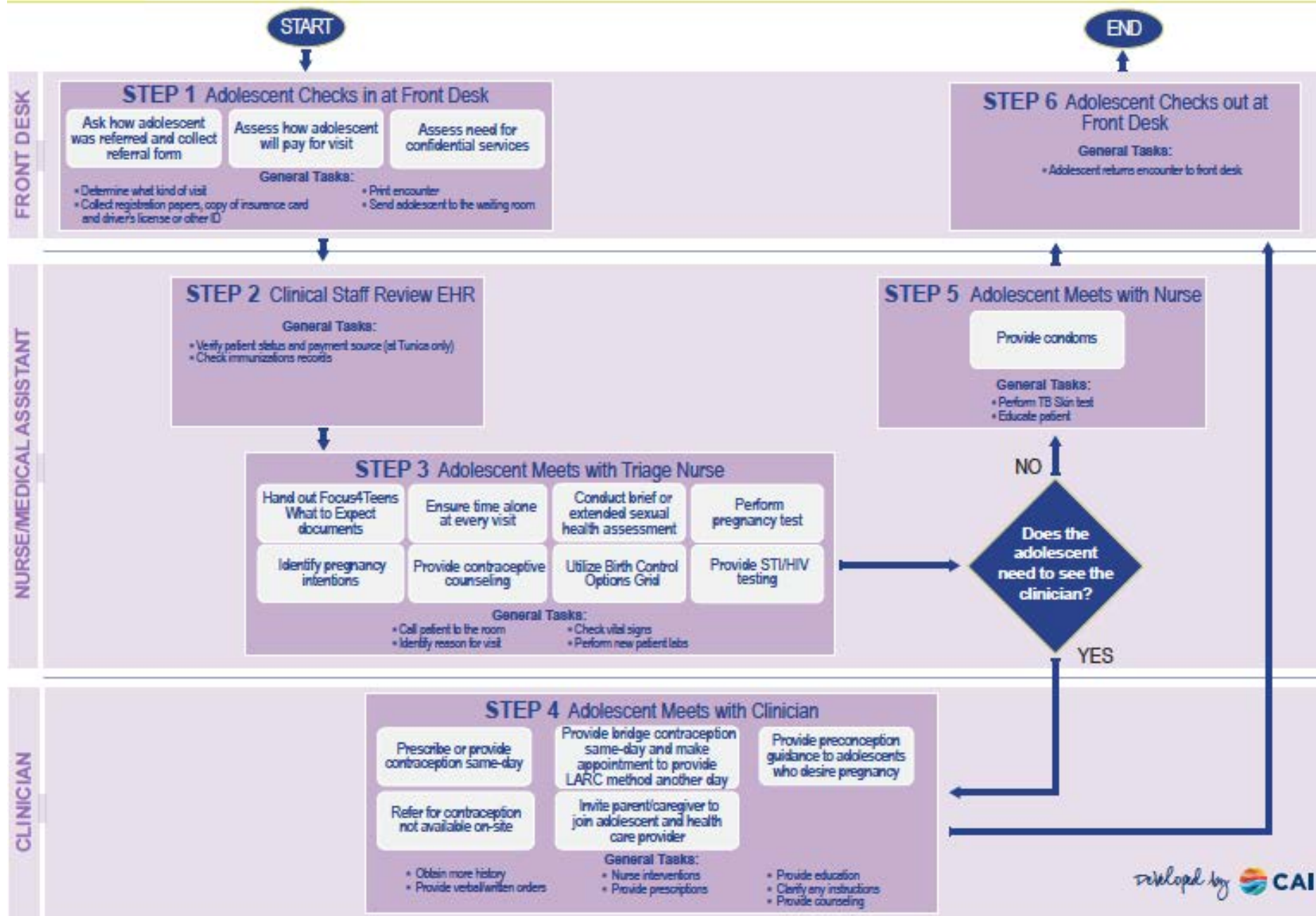
- We are partnering with Youth Advisory Council (YAC) members in the design, implementation, and evaluation of Focus4Teens activities to improve youth-friendly sexual and reproductive (SRH) care at partnering clinics.
  - We are bringing youth and healthcare staff together to identify ways to integrate evidence-based practices (EBPs) into clinic workflow.
1. Clinic walkthroughs conducted by YAC members;
  2. Process mapping with multidisciplinary practice teams (MPTs) from pediatrics, family practice, and school-based clinics to describe their current workflows and integrate the SRH/EBPs into standard work processes;
  3. Review revised workflows with YAC members, collate their feedback and provide to MPTs;
  4. YAC members and MPTs convene to share feedback and further refine the revised workflows;
  5. Pilot-test the revised workflows; and
  6. YAC members and MPTs reconvene to finalize the new workflows based on pilot-test results.





# Aaron E. Henry Community Health Center Process Map: New Family Medicine Patient

This comprehensive process map outlines the major steps an adolescent takes as a new family medicine patient and the key corresponding roles and tasks agreed upon by health center staff. Tasks highlighted in white boxes are evidence-based practices for providing quality sexual and reproductive healthcare to adolescents.



THANK YOU

Questions and Answers