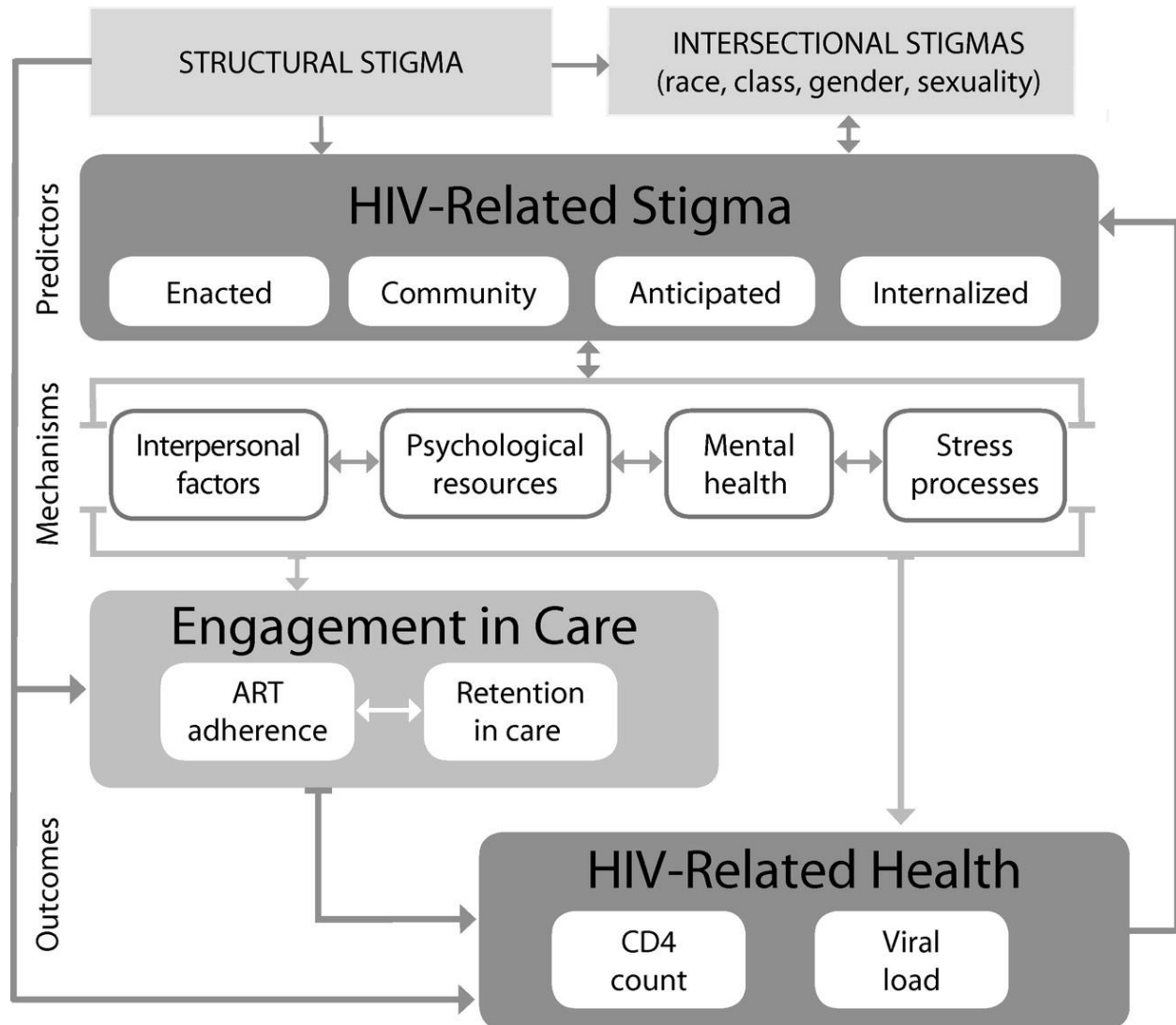


Stigma Dimensions | Handout

Adherence to HIV care and treatment recommendations is essential for ensuring health, longevity, and a suppressed viral load among people living with HIV (PLWH). A growing body of literature suggests that fears and experiences of HIV-related stigma not only affect the quality of life and mental health of PLWH but are also related to poor engagement in HIV care and treatment.

Four dimensions of HIV-Related Stigma: Enacted | Community | Anticipated | Internalized

Conceptual Framework for HIV-Related Stigma, Engagement in Care, and Health Outcomes



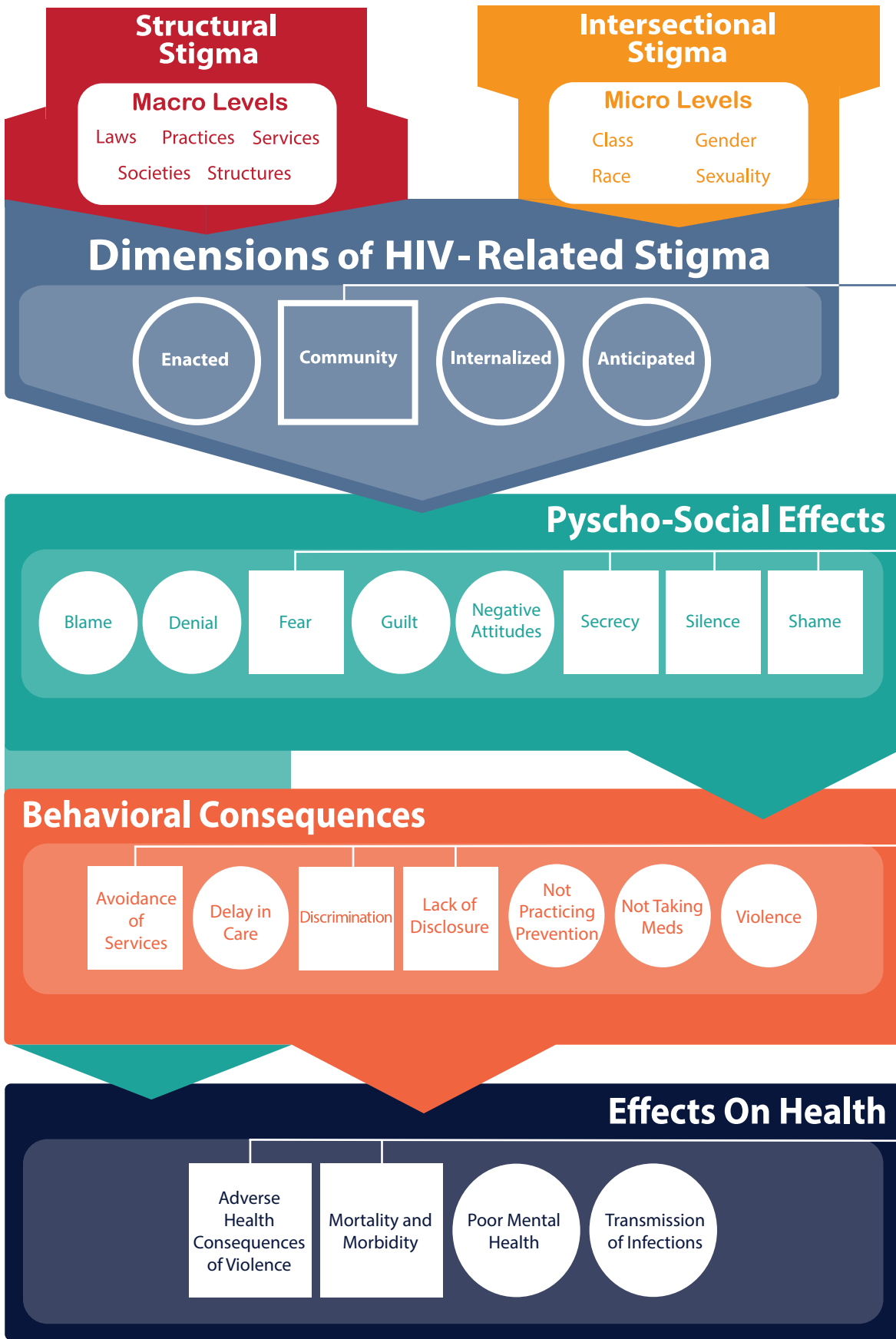
Source: <https://ajph.aphapublications.org/doi/10.2105/AJPH.2017.303744>

A Framework

For The Effects of Stigma on Health



Sources:
<https://www.avert.org/professionals/hiv-social-issues/stigma-discrimination>
<http://alphct.org/fresh>
<https://ajph.aphapublications.org/doi/10.2105/AJPH.2017.303744>
<https://www.ncbi.nlm.nih.gov/pmc/articles/PMC5143223/>



They [my family] were embarrassed and didn't want to talk to me. My mother essentially said, 'Good luck, you're on your own.'

- Shana Cozad from Tulsa, USA, on her family's reaction after she tested positive for HIV.

My daughter refused to go to the hospital to receive medicines. My daughter died because of the fear of stigmatization and discrimination.

- Patience Eshun from Ghana, who lost her daughter to an AIDS-related illness

In [town], you might get jumped on if they find out.

- (Man/Woman living with HIV, Alabama, FRESH Study Focus Group)