



# The Intersections of Oral Health and Primary Care

## Part II

**Presented By: Mark Schweizer, DDS, MPH**

*Associate Professor, Dean Community Programs and Public Health*

*Nova Southeastern University College of Dental Medicine*

*Dental Director, Southeast AIDS Education & Training Center*

# Disclosures

- No financial relationships with commercial entities to disclose
- This slide set has been peer-reviewed to ensure that there are no conflicts of interest represented in the presentation

*This program is supported by the Health Resources and Services Administration (HRSA) of the U.S. Department of Health and Human Services (HHS) under grant number U1OHA30535. The contents are those of the author(s) and do not necessarily represent the official views of, nor an endorsement, by HRSA, HHS, or the U.S. Government. For more information, please visit [HRSA.gov](http://HRSA.gov).*

# Learning Objectives

By the end of this module, the learner will be able to:

- Identify the Relationships between oral disease and comorbidity's Hepatic function, bone disorders, and diabetes
- Discuss dental recommendations for treated patients with HIV

# HIV Continuum of Care

## HIV CARE CONTINUUM:

THE SERIES OF STEPS A PERSON WITH HIV TAKES FROM INITIAL DIAGNOSIS THROUGH THEIR SUCCESSFUL TREATMENT WITH HIV MEDICATION



# Comorbidity

## co·mor·bid·i·ty

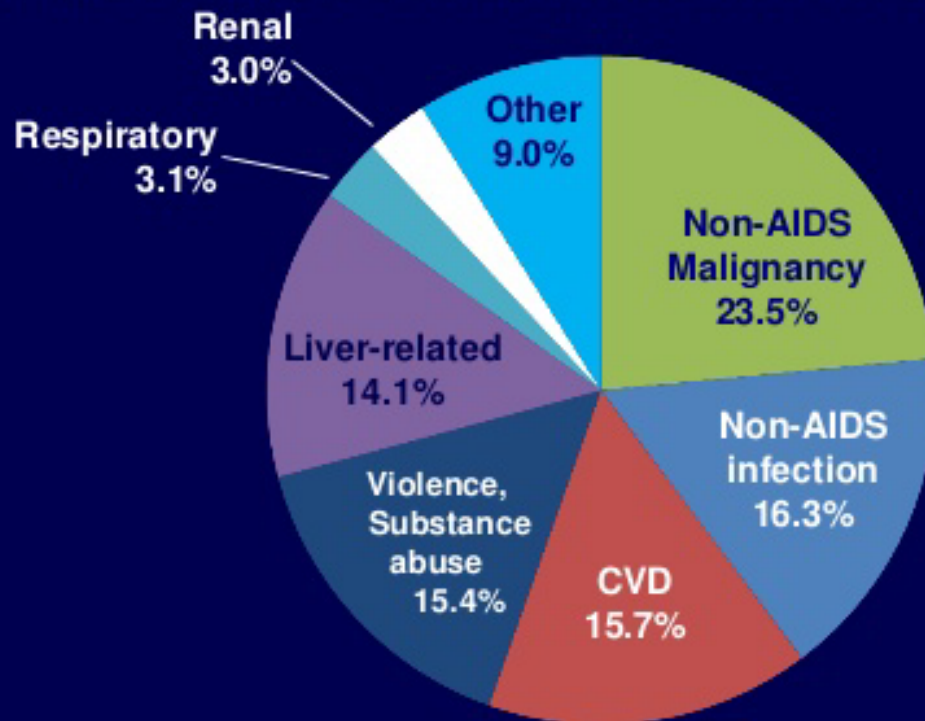
*noun*

the simultaneous presence of two chronic diseases or conditions in a patient.

- Comorbidity is associated with worse health outcomes, more complex clinical management, increased health care costs.

# Non-AIDS Diseases Now Account for Majority of Deaths in HIV

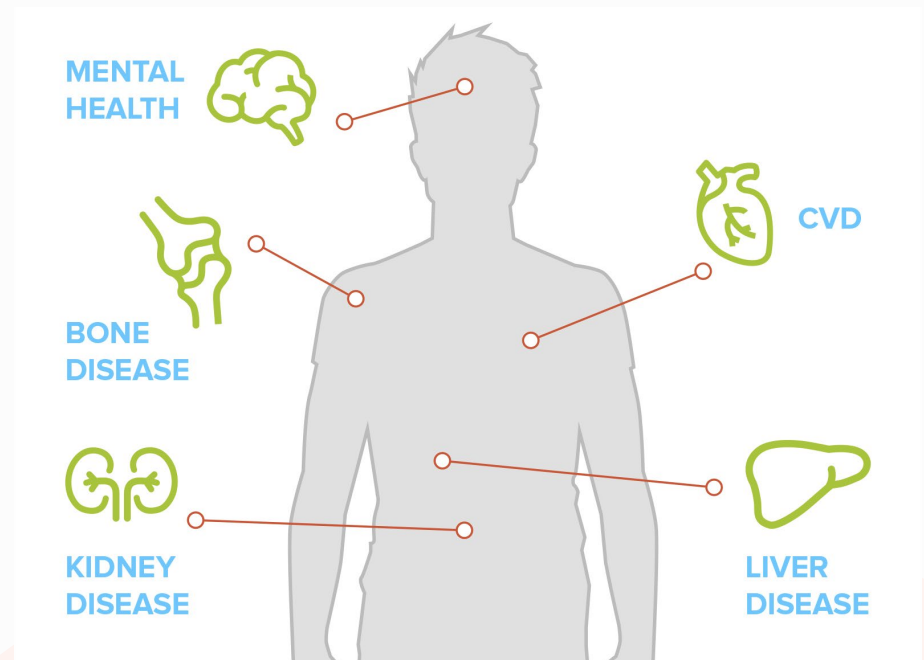
- 1,876 deaths among 39,727 patients
- Non-AIDS related deaths accounted for 50.5%

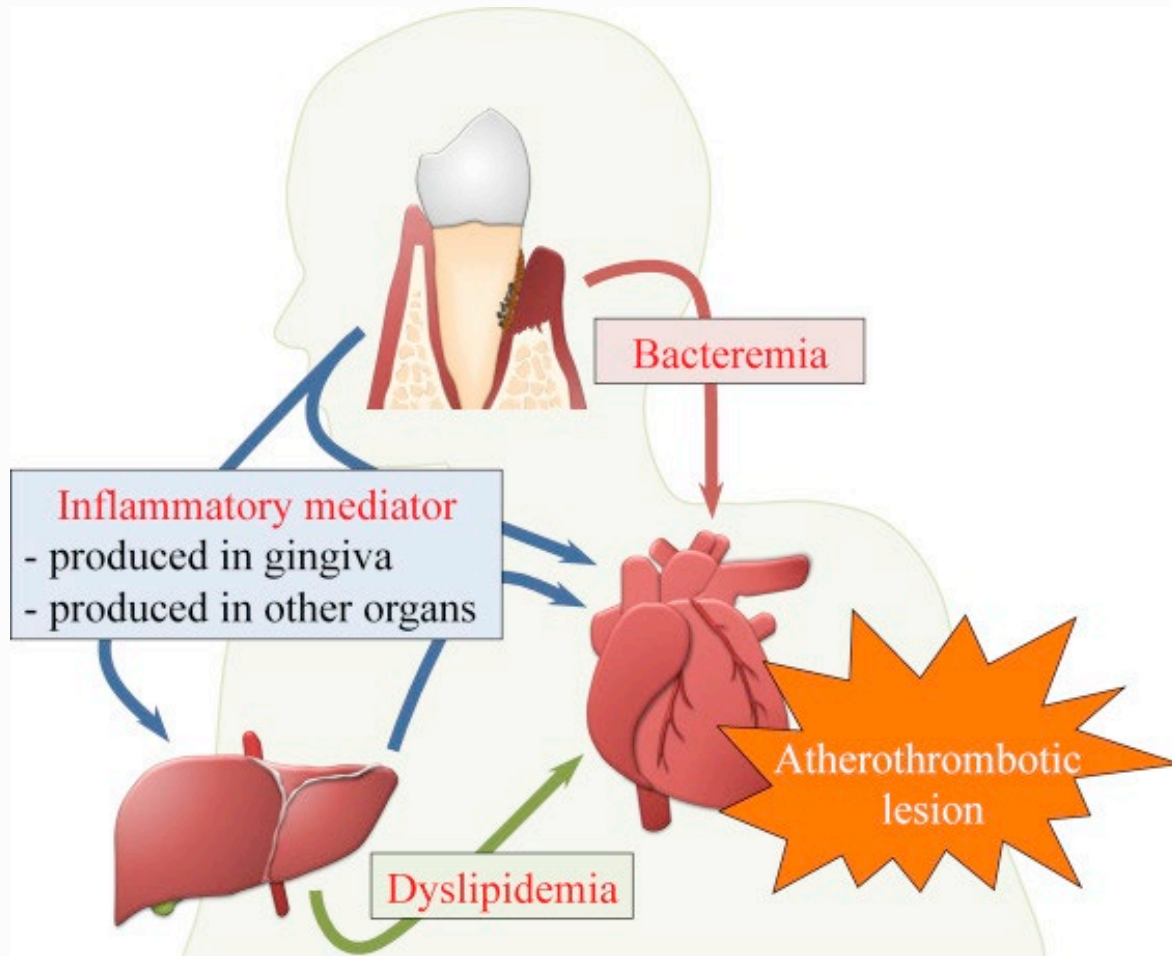


Antiretroviral Therapy Cohort Collaboration (ART-CC). *Clin Infect Dis*. 2010;50:1387-1396.

# Common Comorbidities in PWH

- Cardiovascular Disease
- Kidney Disease
- Neurocognitive
- **Hepatic Function**
- **Bone Disorders**
- **Diabetes**







# Relationships of Comorbidities and Oral Health (Hepatic Disease)

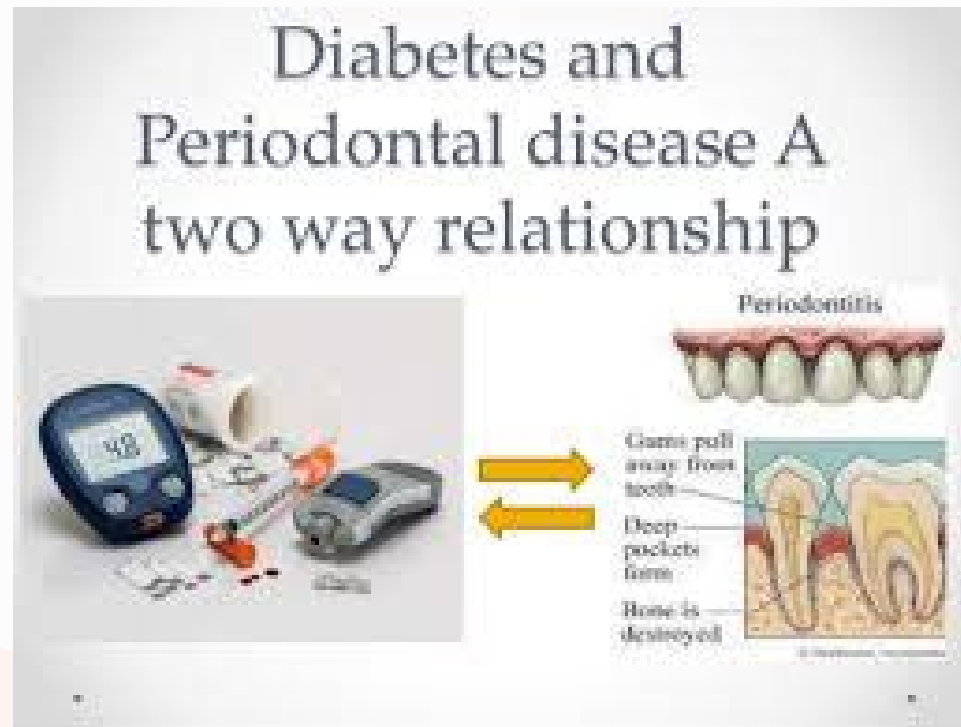
- Complementary evidence from an epidemiological survey and a clinical study show that non-alcoholic fatty liver disease is associated with periodontitis and that the association is stronger with significant liver fibrosis
- Periodontal disease was more frequent in patients with HCV probably due to the high prevalence of diabetes mellitus.
- Importance of Screening and management of HIV patients for Hepatitis and Liver Disease

# Relationships of Comorbidities and Oral Health (Bone Disorders)

- Osteoporosis effects bone density, reducing strength, which can result in fractures. Periodontitis (gum disease) is a chronic infection that affects the gums and the bones that support teeth.
- Oral symptoms of low bone density are similar to signs of gum disease. Indicators include:
  - Loose teeth
  - Receding gums
  - Ill-fitting or loose dentures

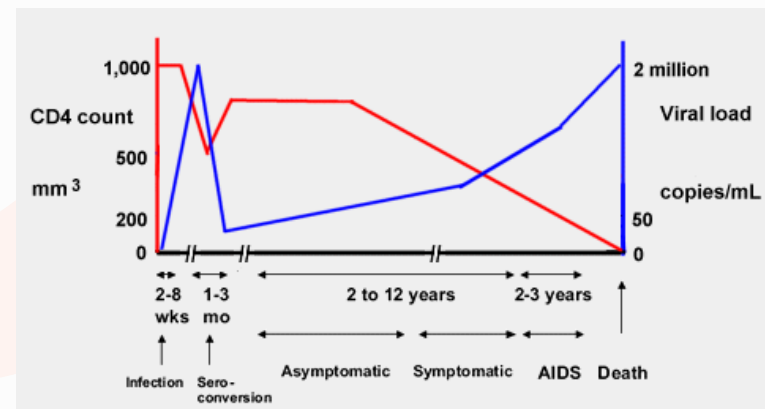
# Relationships of Comorbidities and Oral Health (Diabetes)

- The relationship between diabetes and periodontitis is truly bidirectional.



# Dental Recommendations for Treating PWH

- The magnitude of the viral load is not an indicator to withhold dental treatment for the patient.
- All health professionals can play an important part in reminding patients of the need for regular follow up and monitoring of these markers. It is recommended that the CD4 and viral load determinants be done every six months to one year.



<http://i-base.info/tfa/section-2/14-how-cd4-and-viral-load-are-related/>

# Antibiotic Prophylaxis

- There are no data supporting the need for routine antibiotic coverage to prevent bacteremia or septicemia arising from dental procedures
- Prophylactic antibiotics should not be prescribed routinely for the dental visit when the HIV infection is well controlled



# Oral Health Training & Resource Center

**AETC** AIDS Education & Training Center Program  
**Southeast**

About Us ▾ Programs & Services ▾ Education & Training ▾ **Provider Resources** ▾ Your Account ▾ 🔍

## Southeast AETC Oral Health Training & Resource Center

### Innovative Training and Resources to Close The Gap Between Overall Health and Oral Health

The SE AETC recognizes that HIV care is complex and challenging. Oral health providers, primary care providers, and other health professionals especially in rural communities affected by HIV – often lack the resources to close the gap between overall health and oral health. The SE AETC is offers innovative training and information to close this gap and improve health outcomes and quality of life for patients.

[Learn More](#) [Contact Us/Request Dental Technical Assistance](#)

<https://www.seaetc.com/oral-health-and-resources-training-center/>

# References

- <https://www.cdc.gov/hiv/statistics/overview/ata glance.html>
- <https://www.avert.org/professionals/hiv-around-world/western-central-europe-north-america/usa>
- Defining Comorbidity: Implications for Understanding Health and Health Services, Valderas, Starfield, Salisbury, Roland, FMedSci , Ann Fam Med 2017 Jul; 7(4): 357–363.
- HIV comorbidities increase in US as patients age. Gallant, vander Valk, Reiss, J. et al .J Infect Dis.2017;doi:10.1093/infdis/jix518/4743770.
- Haydée WT Jordão, Gerry McKenna, Úna C McMenamin, Andrew T Kunzmann, Liam J Murray, Helen G Coleman. The association between self-reported poor oral health and gastrointestinal cancer risk in the UK Biobank: A large prospective cohort study. United European Gastroenterology Journal, 2019; 205064061985804 DOI: 10.1177/2050640619858043
- Periodontitis is associated with significant hepatic fibrosis in patients with non-alcoholic fatty liver disease, William Alazawi ,Eduardo Bernabe,David Tai,Tomasz Janicki,Polychronis Kemos,Salma Samsuddin,Wing-Kin Syn,David Gillam,Wendy Turner, 2017 Dec 8. doi.org/10.1371/journal.pone.0185902.
- Rezazadeh, F., Emad, S., & Emad, M. (2019). Relationship between Bone Mineral Density and Oral Health Status among Iranian Women. International journal of preventive medicine, 10, 149. [https://doi.org/10.4103/ijpvm.IJPVM\\_314\\_18](https://doi.org/10.4103/ijpvm.IJPVM_314_18)

# References Continued

- [https://www.medicinenet.com/oral\\_health\\_and\\_bone\\_disease/article.htm#oral\\_health\\_and\\_bone\\_disease\\_facts](https://www.medicinenet.com/oral_health_and_bone_disease/article.htm#oral_health_and_bone_disease_facts)
- Takeda, M.; Matsuda, Y.; Ikebuchi, K.; Takeda, M.; Abe, T.; Tominaga, K.; Isomura, M.; Nabika, T.; Kanno, T. Relationship between Oral Health Status and Bone Mineral Density in Community-Dwelling Elderly Individuals: A Cross-Sectional Study. *Healthcare* 2021, 9, 432. <https://doi.org/10.3390/healthcare9040432>.
- Dental health and diabetes The link between oral hygiene and wellness
- McDevitt, Diane MS, RN, ACNS-BC, ANP; Gattullo, Barbara APRN-BC, CDE Nursing Made Incredibly Easy!: July/August 2020 - Volume 18 - Issue 4 - p 11-14 doi: 10.1097/01.NME.0000668372.04867.9b
- Lamster IB, Lalla E, Borgnakke WS, Taylor GW. The relationship between oral health and diabetes mellitus. *J Am Dent Assoc.* 2008 Oct;139 Suppl:19S-24S. doi: 10.14219/jada.archive.2008.0363. PMID: 18809650.
- <https://www.cdc.gov/diabetes/managing/diabetes-oral-health.html>



# AETC Program National Centers and HIV Curriculum

- **National Coordinating Resource Center** – serves as the central web –based repository for AETC Program training and capacity building resources; its website includes a free virtual library with training and technical assistance materials, a program directory, and a calendar of trainings and other events. Learn more: <https://aidsetc.org/>
- **National Clinical Consultation Center** – provides free, peer-to-peer, expert advice for health professionals on HIV prevention, care, and treatment and related topics. Learn more: <https://nccc/ucsf.edu>
- **National HIV Curriculum** – provides ongoing, up –to-date HIV training and information for health professionals through a free, web –based curriculum; also provides free CME credits, CNE contact hours, CE contact hours, and maintenance of certification credits. Learn more: [www.hiv.uw.edu](http://www.hiv.uw.edu)

# THANK YOU FOR ATTENDING!

