

# Building the Plane as We Fly: Our Journey to Providing HIV Care within Our Existing Integrated Care Model

Annie Kolarik, MD

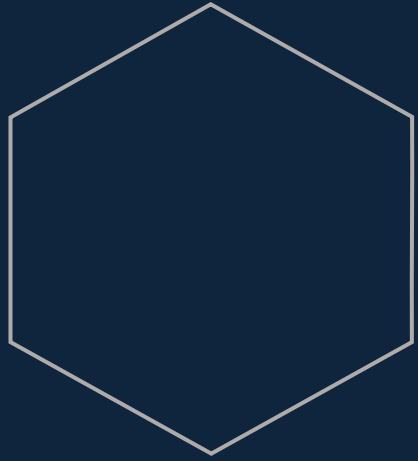
Anna Thomas, FNP

Eboni Winford, PhD, MPH



**Cherokee**  
HEALTH SYSTEMS



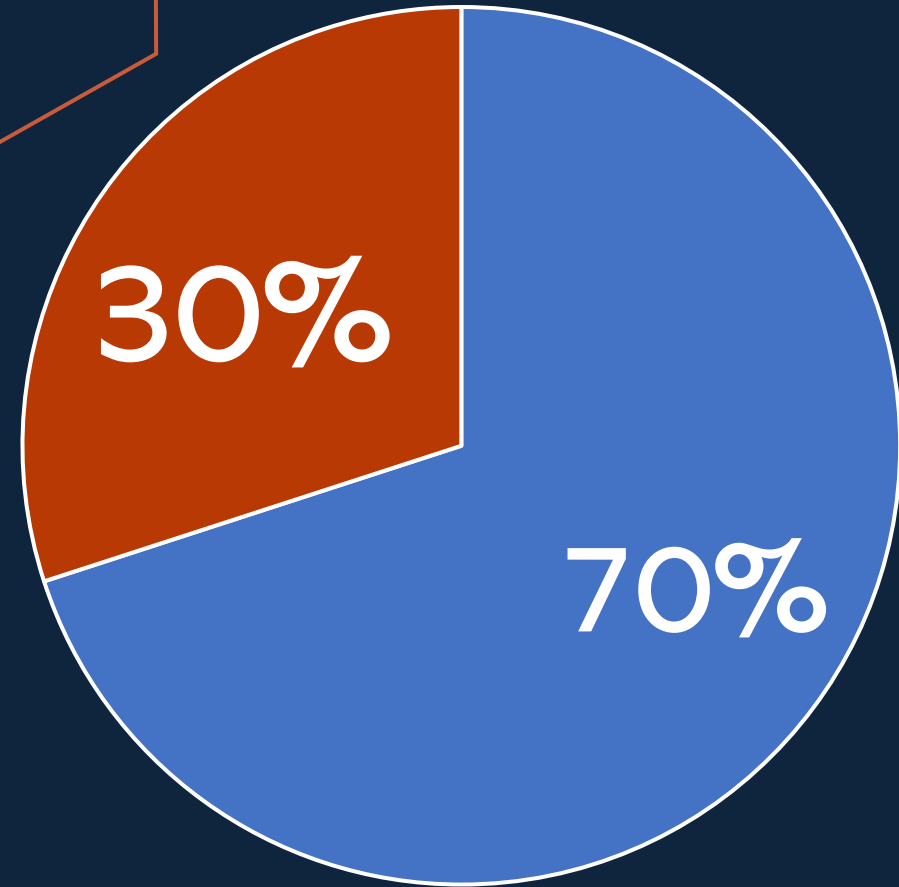


# Agenda



# Our Clinical Model

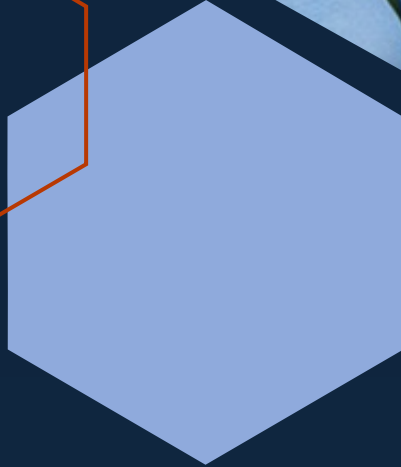
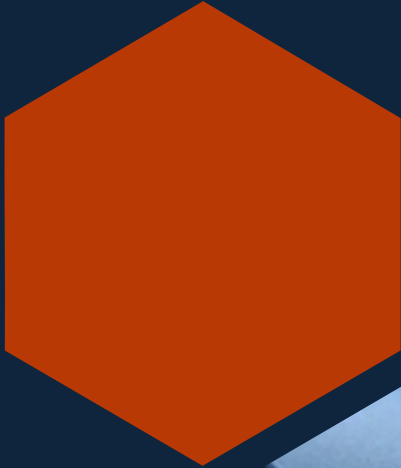
- Integrated care
- Behaviorist on PC team
- Consulting psychiatrist on PC team
- Shared patient panel & population health goals
- Shared support staff, physical space, & clinical flow
- BH access at the point of care
- PC team-based co-management & care coordination
- Shared documentation, communication, & treatment planning



■ Treatment in Primary care

■ Treatment in Specialty Sector

# Origin Story



Hiring Practices

Fertile Ground

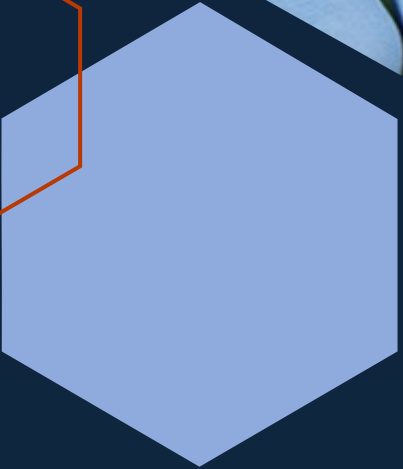
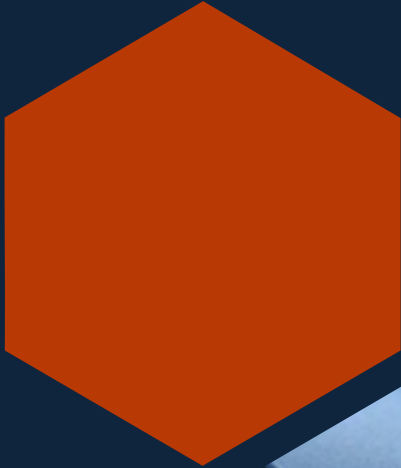
Hub & Spokes

Patient & Community Need

Training



# Origin Story



# Origin Story

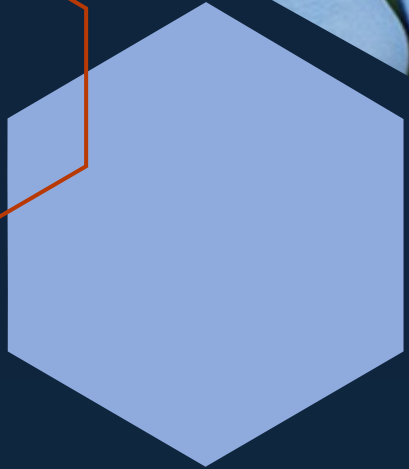


**Fifth Avenue**



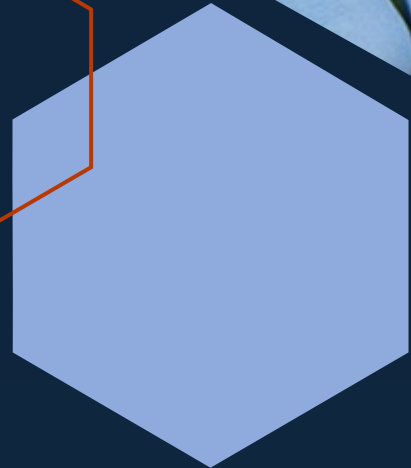
## **Patient Population**

Individuals experiencing homelessness  
IVDU  
STIs





**Origin Story**



**Patient Population**  
Individuals experiencing homelessness  
IVDU  
STIs



**Mobile  
Clinic**





# Origin Story



# Infectious Disease Clinic



# Patient Population

MAT  
Hep C



**Origin Story**

**Gender Affirming  
Hormone  
Treatment**



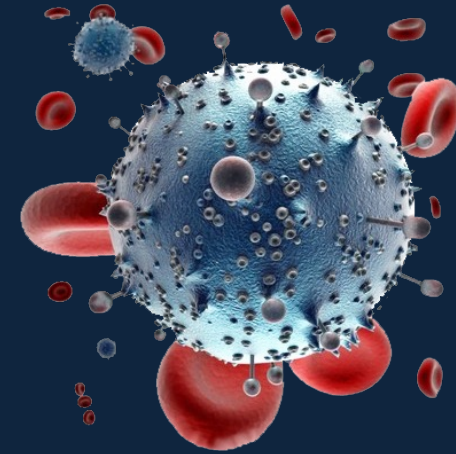
**Patient Population**  
Planned Parenthood  
Primary Care

# Infectious Disease Clinic



## Access

- Health departments
- Patient word of mouth  
Hospitals (OB/GYN)
- Internal referral



## Challenges

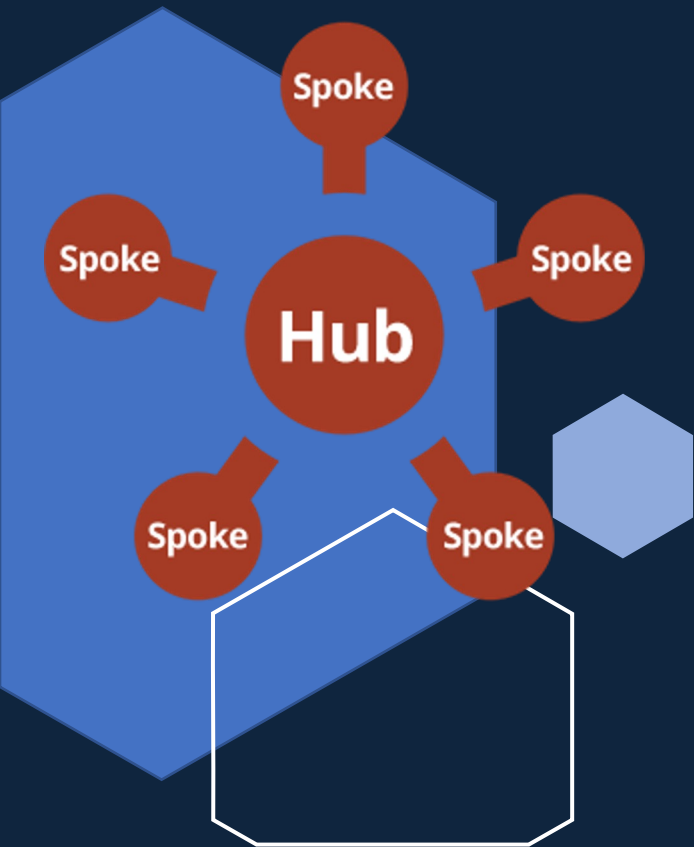
- Streamlined access
- Community awareness
- No-show rates
- Bottleneck scheduling



## Lessons Learned

- Social media
- Patient information
- Routine assessment of sexual history and substance use history

# Infectious Disease in Primary Care



## Access

- PCP management
- Any open door—BHC, PCP, CHC



## Challenges

- Provider knowledge
- Lack of streamlined workflow
- Time constraints
- Providers' lack of comfort in discussing sexual and substance use history



## Lessons Learned

- Importance of external consultants
- Repository of knowledge
- Learning opportunities
- Experts with open doors
- Provider note templates



# GAHT



Everyone  
is  
Welcome  
Here

  
Cherokee



## Access

- Online scheduling
- Same day access
- Prioritized access
- Absorbing Planned Parenthood patients



## Challenges

- Providers' comfort with assessing gender dysphoria
- Providers' discomfort prescribing hormones
- Inappropriate language



## Lessons Learned

- Open door support
- Educate the entire team
- Provide language examples
- Develop protocols
- Create streamlined access to affirming providers



# Open Discussion

Q&A

# Thank you

[Annie.Kolarik@cherokeehealth.com](mailto:Annie.Kolarik@cherokeehealth.com)

[Anna.Thomas@cherokeehealth.com](mailto:Anna.Thomas@cherokeehealth.com)

[Eboni.Winford@cherokeehealth.com](mailto:Eboni.Winford@cherokeehealth.com)

