



Southeast AETC Regional Conference 2023

Friday, September 1

Cempa Community Care

PEP - The Rodney Dangerfield of HIV Prevention

Presentation Prepared By:

Mario G. Forte, PrEP / PEP Navigator



Disclosures

- *I have no conflicts of interest to disclose with any part or portion of this presentation*
- *This program is supported by the Health Resources and Services Administration (HRSA) of the U.S. Department of Health and Human Services (HHS) under grant number U1OHA30535 as part of an award totaling \$4.2m. The contents are those of the author(s) and do not necessarily represent the official views of, nor an endorsement, by HRSA, HHS, or the U.S. Government. For more information, please visit [HRSA.gov](https://www.hrsa.gov).*
- *“Funding for this presentation was made possible by cooperative agreement U1OHA30535 from the Health Resources and Services Administration HIV/AIDS Bureau. The views expressed do not necessarily reflect the official policies of the Department of Health and Human Services nor does mention of trade names, commercial practices, or organizations imply endorsement by the U.S. Government. Any trade/brand names for products mentioned during this presentation are for training and identification purposes only.”*



TELL ME ABOUT YOU



WHAT WE WILL COVER TODAY



01 Brief Overview of PEP & The Barriers to Access

02 What does the community know?

03 Developing the PEP Protocol

04 Developing a PEP Starter Kit

05 Community PEP Partners

06 PEP Outreach

07 PEP to PrEP





01

BRIEF OVERVIEW OF PEP



WHAT IS PEP?



PEP Stands for Post Exposure Prophylaxis

Medicine that is available to anyone that is HIV – Negative that has had an IMMEDIATE* exposure to HIV.

*Exposure within the past 72 Hours



NO SERIOUSLY, WHAT IS PEP?

- Providers aren't up to speed with the Protocol
 - Including Emergency Departments, Urgent Care, Etc.
- Community knowledge about its existence.
 - Even among LGBTQ+ & MSM
- Agencies/STI Clinics, not having a protocol
 - No webpage, hotline or flyers with information
- People think they are NOT AT RISK FOR CONTRACTING HIV.

PEP: THE BARRIERS



Public knowledge that the protocol (PEP) exists



Finding a prescriber immediately



Public knowledge about where to go for PEP



Finding a pharmacy that has the medicines in stock



Correct assessment of the actual exposure risk



Cost / paying for the medicines

ALL within 72 Hours of Exposure



02

**WHAT DOES THE
COMMUNITY
KNOW?**

At a recent minority health fair in Chattanooga, TN . . .

We asked 165 Participants:

- Their AGE, GENDER & RACE

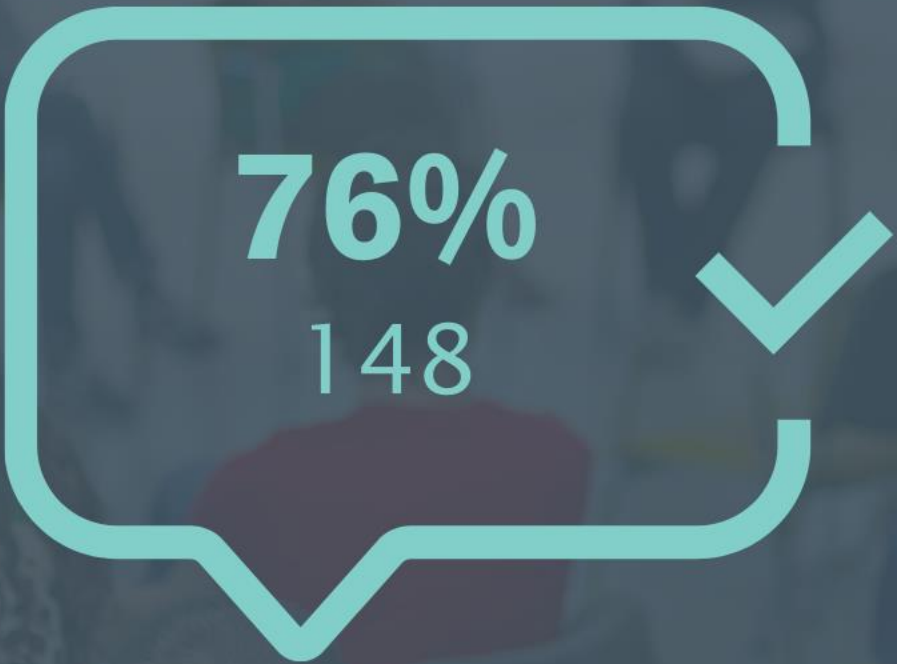
AND . . .

- To rate levels of understanding on how HIV is transmitted.
- To rate their self perceived Risk of acquiring HIV
- How much anxiety do they have about HIV
- Had they heard about or know about PrEP?
- Had they heard about or know about PEP?





WAYS OF HIV TRANSMISSION ANSWERS



76%
148



24%
39

How would you rate your risk for acquiring HIV?

0%

HIGH

0%

MODERATE

100%

LOW



How much anxiety do you have about contracting HIV?

0%

I have very HIGH anxiety about contracting HIV

17%

I have MODERATE anxiety about contracting HIV

83%

I have LOW anxiety about contracting HIV



HAVE HEARD ABOUT PrEP



22%



78%



HAVE HEARD ABOUT PEP

9%

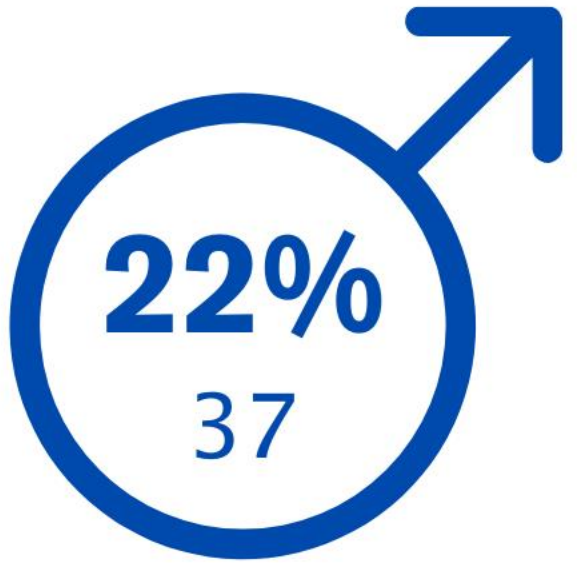
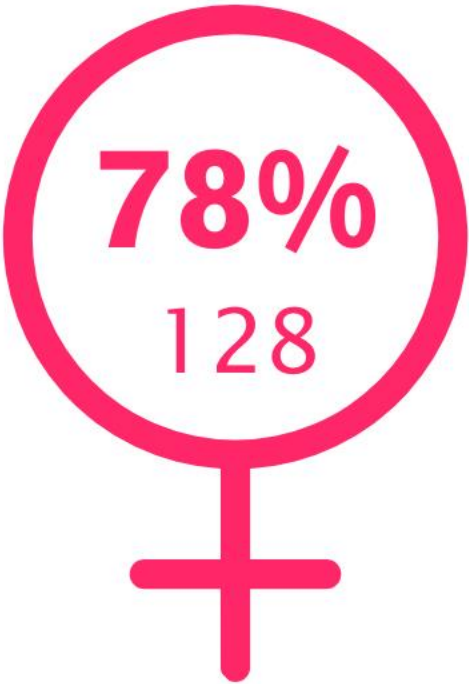


91%



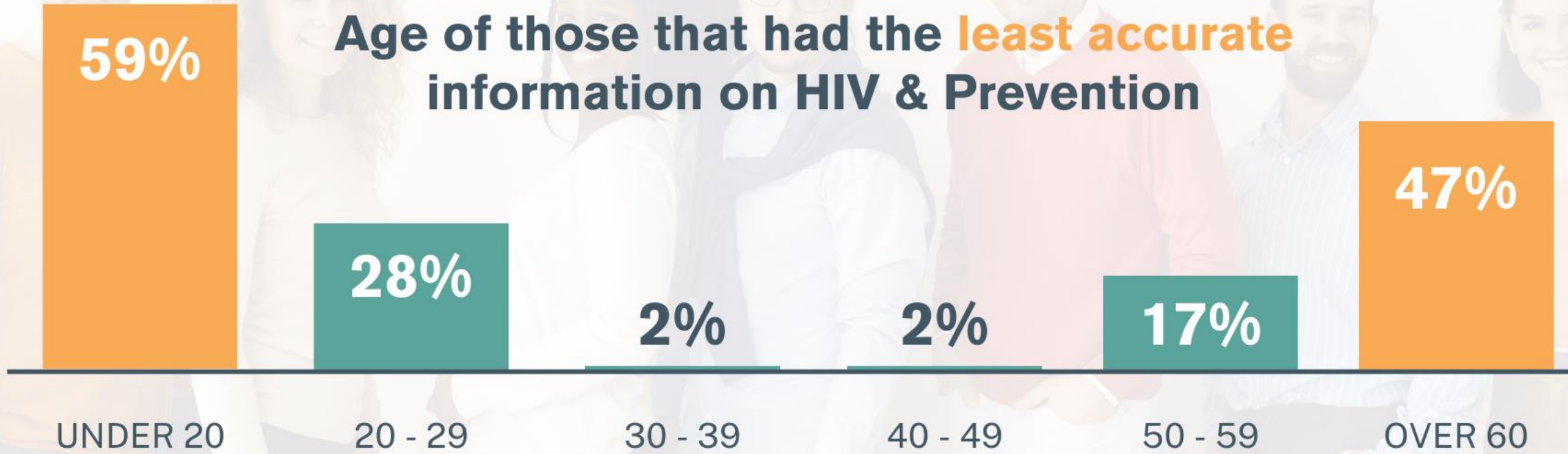


GENDER OF THE 165 PARTICIPANTS

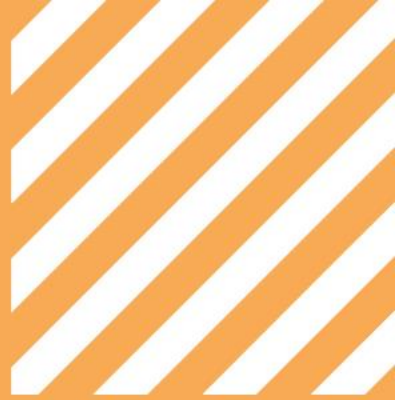




Age of those that had the **least accurate information on HIV & Prevention**



BREAKING DOWN THE MAJOR PEP ACCESS ISSUES



1) How do we get the information out into the community?



2) When is PEP most difficult to attain?



3) What providers are available on the weekends?

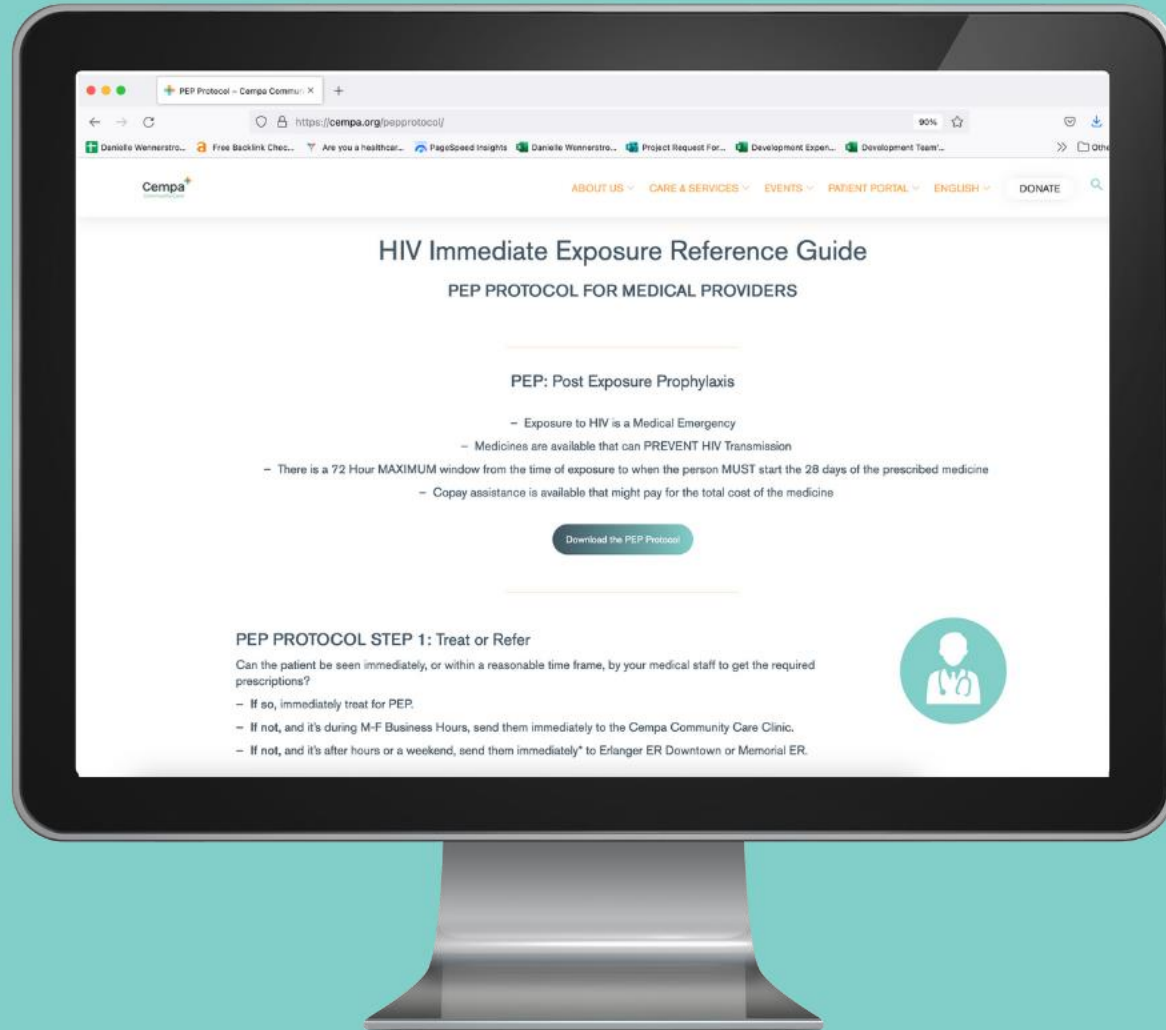


4) What pharmacies have the medications in stock?



03

DEVELOPING A PEP PROTOCOL



ONLINE PEP PROTOCOL REFERENCE GUIDE FOR PROVIDERS



04

DEVELOPING A PEP STARTER KIT

THE PEP “STARTER” KIT

THREE DAYS OF PEP MEDICATION
IN A PRE-PACKAGED KIT



ADVANTAGES OF THE PEP STARTER KIT



Treatment can begin immediately



Allows up to (3) days of time to get to a provider visit for HIV testing, consultation and prescription for the remaining 25 days of PEP treatment.

TOOLS TO DEVELOP THE PEP STARTER KIT

Having an in-house pharmacy* helps. If not, see if you can work with a pharmacist or Drug Manufacturer for samples

Provider at your agency is responsible for prescribing the 3 day Starter Kit**

Develop instruction materials.

*An option that can work for agencies that don't have an in-house pharmacy: When a PEP incident occurs during hours when the clinic is closed, set up a PEP hotline and call in three days of medication to a pharmacy and have the client follow up for the remainder of the PEP Treatment.

** Unless the Starter Kit is distributed by a Partner prescriber.



DEVELOPING MATERIALS

PEP Protocol & Information Flyer for Providers

PEP Starter Kit Information Flyer

PEP Starter Kit Instructions for provider

PEP Starter Kit Instructions for Patient

Cempa
Community Care

MARIO G. FORTE
PrEP / PEP Navigator
423.226.1115
mforte@cempa.org

3-DAY PEP MEDICATION KIT INSTRUCTIONS

PEP (Post Exposure Prophylaxis) **MUST** be taken within a 72 hour window from the time of possible HIV exposure.

Taking 28 days of PEP medication can reduce your client's risk of acquiring HIV.
This 3-Day PEP Starter Kit is intended to provide clients with several days of medication so that they can get to our clinic at the next available OPEN CLINIC HOURS.

Please assist your client with determining when they should begin their PEP regimen.

Exposure Date	Exposure Time	Add 72 Hours	Start Medication Before

Instructions for Providers



PEP Protocol For Providers



Information Flyer

FRONT

Cempa
Community Care
3-DAY PEP KIT
Starter kit contains 3-DAYS of 28-DAY regimen.

STEP 1
STEP 2

Take your first set of pills following the medication instructions inside.
Call 423.265.2273 to schedule your PEP Treatment Appt with Cempa.

BACK

Cempa Community Care Clinic
1000 E 3rd St, Suite 300 | Chattanooga, TN 37403
Monday - Thursday 8:00a - 5:00p
Friday 8:00a - 2:00p
FREE Parking Code : 0 1 6 0
Call 423.265.2273 For Questions

INTERIOR

PEP (Post Exposure Prophylaxis) should be taken within a 72 hour window from the time of possible HIV exposure.

Taking the full 28 days of PEP medication can reduce your risk of acquiring HIV.

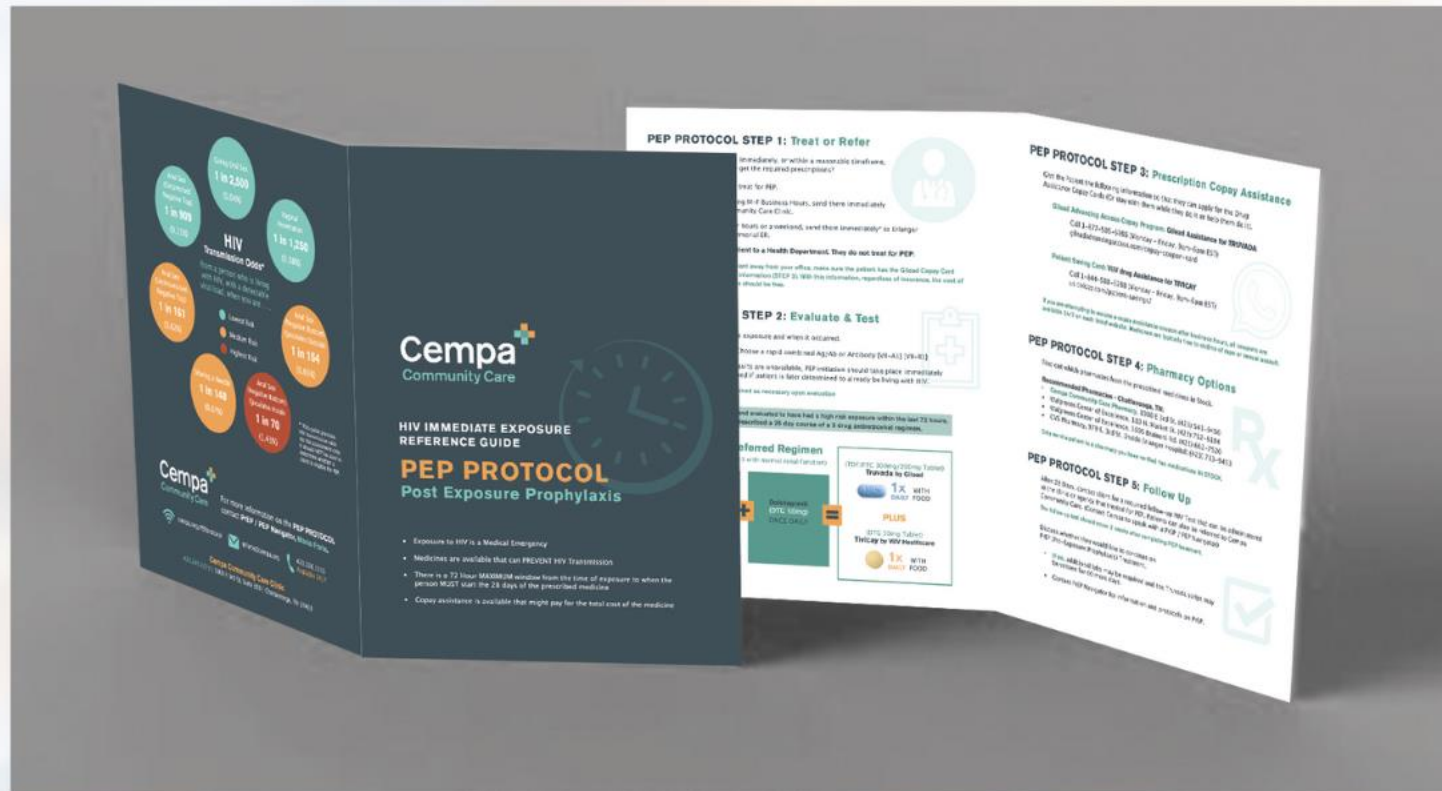
Start Medication Before:

3-Day Medication Instructions

TRUVADA 1x DAILY WITH FOOD
TIVICAY 1x DAILY WITH FOOD

Instructions for Patient

PEP PROTOCOL & INFORMATION FLYER FOR PROVIDERS





PEP PROTOCOL FOR PROVIDERS

Cempa
Community Care

HIV IMMEDIATE EXPOSURE
REFERENCE GUIDE



PEP PROTOCOL

Post Exposure Prophylaxis

- Exposure to HIV is a Medical Emergency
- Medicines are available that can PREVENT HIV Transmission
- There is a 72 Hour MAXIMUM window from the time of exposure to when the person MUST start the 28 days of the prescribed medicine
- Copay assistance is available that might pay for the total cost of the medicine

PEP PROTOCOL FOR PROVIDERS

PEP PROTOCOL STEP 1: Treat or Refer

Can the patient be seen immediately, or within a reasonable timeframe, by your medical staff to get the required prescriptions?

If so, immediately treat for PEP.

If not, and it's during M-F Business Hours, send them immediately to the Cempa Community Care Clinic.

If not, and it's after hours or a weekend, send them immediately* to Erlanger ER Downtown or Memorial ER.

DO NOT send a patient to a Health Department. They do not treat for PEP.

*Before you send your patient away from your office, make sure the patient has the Gilead Copay Card & Merck Drug Assistance information (STEP 3). With this information, regardless of insurance, the cost of the 28 day regimen of pills should be free.



PEP PROTOCOL STEP 2: Evaluate & Test

1) **Evaluation*** - Discuss exposure and when it occurred.

2) **Perform HIV Test** - Choose a rapid combined Ag/Ab or Antibody [VII-A1] [VII-B1]

3) If Rapid Blood Test results are unavailable, PEP initiation should take place immediately and can be discontinued if patient is later determined to already be living with HIV.

*STI Testing may be determined as necessary upon evaluation



If patient is HIV Negative and evaluated to have had a high risk exposure within the last 72 hours, then patient should be prescribed a 28 day course of a 3 drug antiretroviral regimen.

TREATMENT: Preferred Regimen

(Adults & Adolescents over 13 with normal renal function)



PEP PROTOCOL FOR PROVIDERS

PEP PROTOCOL STEP 3: Prescription Copay Assistance

Give the Patient the following information so that they can apply for the Drug Assistance Copay Cards (Or stay with them while they do it or help them do it).

Gilead Advancing Access Copay Program: Gilead Assistance for TRUVADA

Call 1-877-505-6986 (Monday – Friday, 9am-6pm EST)
gileadadvancingaccess.com/copay-coupon-card

Patient Saving Card: Viiv drug Assistance for TIVICAY

Call 1-844-588-3288 (Monday – Friday, 9am-6pm EST)
us.tivicay.com/patient-savings/



If you are attempting to access a copay assistance coupon after business hours, all coupons are available 24/7 on each listed website. Medicines are typically free to victims of rape or sexual assault.

PEP PROTOCOL STEP 4: Pharmacy Options

Find out which pharmacies have the prescribed medicines in Stock.

Recommended Pharmacies - Chattanooga, TN:

- Cempa Community Care Pharmacy, 1000 E 3rd St. (423) 541-9450
- Walgreens Center of Excellence, 110 N. Market St. (423) 752-8104
- Walgreens Center of Excellence, 3605 Brainerd Rd. (423) 662-7520
- CVS Pharmacy, 979 E. 3rd St. (inside Erlanger Hospital) (423) 713-9453

Only send a patient to a pharmacy you have verified has medications IN STOCK.



PEP PROTOCOL STEP 5: Follow Up

After 28 Days, contact client for a required follow-up HIV Test that can be administered at the clinic or agency that treated for PEP. Patients can also be referred to Cempa Community Care. (Contact Cempa to speak with a PrEP / PEP Navigator)

The follow up test should occur 2 weeks after completing PEP treatment.

Discuss whether they would like to continue on PrEP (Pre-Exposure Prophylaxis) Treatment.

- If so, additional labs may be required and the Truvada script may be written for 60 more days.
- Contact PrEP Navigator for information and protocols on PrEP.



PEP PROTOCOL FOR PROVIDERS

Anal Sex
(Circumcised
Negative Top)
1 in 909
(0.11%)

Giving Oral Sex
1 in 2,500
(0.04%)

Vaginal
Penetration
1 in 1,250
(0.08%)

HIV Transmission Odds*

from a person who is living
with HIV, with a detectable
viral load, when you are . . .

Anal Sex
(Uncircumcised
Negative Top)
1 in 161
(0.62%)

- Lowest Risk
- Medium Risk
- Highest Risk

Anal Sex
(Negative Bottom)
Ejaculates Outside
1 in 154
(0.65%)

Sharing a Needle
1 in 149
(0.67%)

Anal Sex
(Negative Bottom)
Ejaculates Inside
1 in 70
(1.43%)

* This guide provides
HIV transmission odds
via risk assessment only.
It should NOT be used to
determine whether a
client is eligible for PEP.

Cempa
Community Care

For more information on the **PEP PROTOCOL**
contact **PrEP / PEP Navigator, Mario Forte.**

 cempa.org/PEPprotocol

 mforte@cempa.org

 423.226.1115
Available 24/7

Cempa Community Care Clinic

423.265.2273 | 1000 E 3rd St, Suite 300 | Chattanooga, TN 37403

PEP STARTER KIT INFORMATION FLYER

Cempa
Community Care

**NOW
OFFERS**

**3-DAY PEP
STARTER KITS**

FOR COMMUNITY
PARTNERS

Visit cempa.org/PEP to order



Visit cempa.org/PEP or call **423.226.1115** to order your PEP Starter Kits

Exposure to HIV is a Medical Emergency – PEP, Post Exposure Prophylaxis, can PREVENT HIV Transmission.

There is a 72 Hour MAXIMUM window from the time of exposure to when the person MUST start the 28 days of the prescribed medicine.

Cempa Community Care's 3-Day PEP Starter Kit is intended to provide your clients with several days of PEP medication to begin their 28-day regimen within the 72-hour window regardless of Cempa's clinic hours.

For more information contact:

MARIO G. FORTE, PrEP / PEP Navigator
423.226.1115
mforte@cempa.org

The kit includes (3) Truvada & (3) Tivicay pills.

3-Day Medication Instructions



Truvada



Tivicay

Take (1) blue tablet 1x daily with food, and (1) yellow tablet 1x daily with food.

Cempa Community Care Clinic

1000 E 3rd St, Suite 300
Chattanooga, TN 37403

Monday - Thursday 8:00a – 5:00p
Friday 8:00a – 2:00p

PEP STARTER KIT INSTRUCTIONS FOR PROVIDERS



MARIO G. FORTE
PrEP / PEP Navigator
423.226.1115
mforte@cempa.org

3-DAY PEP MEDICATION KIT INSTRUCTIONS

PEP (Post Exposure Prophylaxis) **MUST** be taken within a 72 hour window from the time of possible HIV exposure.

Taking 28 days of PEP medication can reduce your client's risk of acquiring HIV.

This 3-Day PEP Starter Kit is intended to provide clients with several days of medication so that they can get to our clinic at the next available OPEN CLINIC HOURS.

Please assist your client with determining when they should begin their PEP regimen.

Exposure Date	Exposure Time	Add 72 Hours	Start Medication Before

CLIENT INSTRUCTIONS

STEP ONE: Your client should take the first dose of medication and follow the 3-Day Medication Instructions inside the pill box.

The kit includes (3) Truvada & (3) Tivicay pills

STEP TWO: Your client should then call 423.265.2273 to schedule their PEP Treatment Appointment with Cempa Community Care. The appointment **MUST** take place before the client's medicines end.

3-Day Medication Instructions



Truvada



Tivicay

Take (1) blue tablet 1x daily with food, and (1) yellow tablet 1x daily with food.

At their PEP Treatment Appointment, clients should expect a short medical examination, consultation and completion of the prescription for the remainder of their PEP medication.

Cempa Community Care Clinic

Call 423.265.2273 to Schedule a PEP Treatment Appointment

1000 E 3rd St, Suite 300 | Chattanooga, TN 37403
Monday - Thursday 8:00a - 5:00p | Friday 8:00a - 2:00p

PEP STARTER KIT INSTRUCTIONS FOR PATIENTS

Cempa
Community Care

3-DAY PEP KIT

Starter kit contains
3-DAYS of 28-DAY
regimen.

STEP
1

Take your first set
of pills following
the medication
instructions inside.

STEP
2

Call **423.265.2273**
to schedule your
PEP Treatment
Appt with Cempa.

PEP (Post Exposure Prophylaxis) should be
taken within a **72 hour** window from the time
of possible HIV exposure.

**Taking the full 28 days of PEP medication
can reduce your risk of acquiring HIV.**

Start Medication Before:

3-Day Medication Instructions



TRUVADA

1x WITH
DAILY FOOD



TIVICAY

1x WITH
DAILY FOOD



**TRUVADA MAY BE
SUBSTITUTED BY GENERIC**



ALTERNATIVE

Cempa Community Care Clinic
1000 E 3rd St, Suite 300 | Chattanooga, TN 37403

Monday - Thursday 8:00a – 5:00p
Friday 8:00a – 2:00p

FREE Parking Code : 0 1 6 0

Call 423.265.2273 For Questions

SUSTAINABILITY OF PEP STARTER KITS

START WITH:

1 Bottle each of Truvada & Tivicay (30 Pills each)

Either purchased from Manufacturer or provided (grant) from Manufacturer or use Clinic Samples.

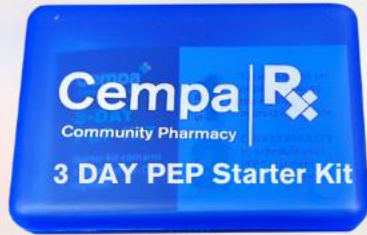
If you reach out to your Gilead and ViiV reps, and tell them what you are wanting to do with PEP, they will more than likely work with you to get you medications for your PEP program.



10 PEP Starter Kits
Containing 3 Days of Treatment



KIT USED



SUSTAINABILITY OF PEP STARTER KITS

KIT CREATED



PEP TREATMENT CALLS FOR 28 DAYS OF MEDICATION

This means after one 3 day kit is used, only **25 pills** are required to fill the remainder of the prescription.

5 Pills each of Truvada & Tivicay can be removed from a 30 pill bottle.

Pharmacy fills **25 pills** of each medication.

One PEP Starter Kit yields 5 Pills from each bottle to be used for additional kits



SUSTAINABILITY OF PEP STARTER KITS

If 6 out of 10 (60%) of recipients of PEP Starter Kits complete the 28 day Treatment, this will yield 30 pills remaining from each medication that can be used for 10 new PEP Starter Kits



10 New PEP Starter Kits
Containing 3 Days of Treatment



WHAT IF YOU DON'T HAVE AN IN-HOUSE PHARMACY?



Partner with a pharmacy (local or specialty)



Establish a Prescription Standing Order between your provider and pharmacy for initial PEP treatment.



Standing Order will typically be written for three or 4 days of PEP medication.



Client should be seen by Provider prior to issuing the remainder of the prescription.

Some agencies have a 24 hour PEP Hotline or PEP Email access that when activated, issues a standing order with a pharmacy to prescribe the PEP Starter Kit, with instructions for the client to get medications and for follow up care for the remainder of treatment.



05

**BUILDING
COMMUNITY
PEP PARTNERS**



BUILDING COMMUNITY PARTNERS FOR PEP: WHO SHOULD BE INCLUDED?

-  Hospital Emergency Departments
-  Health Departments – Urban & Rural
-  Urgent Care / Walk-in Clinics
-  College/University Wellness Centers
-  HIV/STI Clinics
-  Rape Crisis Centers



If you are partnering with an Urgent Care or ER, ask to see their existing PEP Protocols



In this REAL world example, This emergency room had a medication protocol developed in the 1990's but they have never updated them.

LOCAL ER

MEDICATIONS FOR HIV PROPHYLAXIS (PEP)

Associate counseled on the following drugs:

Combivir (AZT + Efavirenz) Kaletra (lopinavir/ritonavir)

Other Please List: _____

Medication Information sheet given to associate

Consent to treat signed

Volunteer statement of intent to avoid pregnancy signed

First dose taken: Date _____ Time _____

Refusal to treat signed

Pharmacist signature: _____

Date / Time _____

Associate Signature: _____

Date/ Time _____

Please give a copy of this form to the associate and send a copy to Employee Health

Consent for Treatment for HIV Post-Exposure Prophylaxis

I understand that my exposure to blood and body fluids increases the risk of getting the human immunodeficiency virus (HIV). The highest risks are associated with exposure to higher volumes of blood and exposure to blood that has a high concentration of HIV virus. The average risk of transmission of HIV for a needle stick injury from HIV infected blood is approximately 0.3% or 3 people out of 1000 needle sticks with HIV infected blood. The risk after

BUILDING COMMUNITY PARTNERS FOR PEP



Rape Crisis Centers

- Develop Relationships
- Detail the services you provide
- Find out if they have a current PEP Protocol
- Provide PEP Protocol Flyer
- Offer PEP Education Training
- Offer PEP Starter Kits*

Other Community Partner Ideas

- Community Kitchen / Homeless Shelters
- College Campus Wellness Centers
- Jails

NOTE: If PEP Starter Kits are handed out, the center/facility Doctor or NP is the prescriber for the 3 days of Medication.



EXAMPLE OF A COMMUNITY PARTNERSHIP FOR PEP

Rape Crisis Center
300 E 8th St, Chattanooga, TN 37403
partnershipfca.com

Background & Partnership Development

The Rape Crisis Center in Chattanooga averages about 40 sexual assault or rape incidences a year (mostly women, but all genders), where a potential HIV exposure could exist, warranting PEP services and treatment

Their only option before partnering with Cempa was to send the patient to a hospital ER. Getting this achieved, along with medications filled in a timely manner within 72 hours of potential exposure, was a major barrier.

Agency Partnership for PEP services began in 2019. PEP navigation protocol was developed and services were provided 24/7. Referrals were made to our clinic for PEP treatment. The biggest issue was the 72 hour window which is necessary to see a provider and that falling during normal clinic hours of operation. We worked on developing ways to speed up access to PEP Treatment.

PEP Starter Kit Program began development in August 2021 and became fully implemented in December 2021.

MOU FOR HIPAA COMPLIANCE

Memorandum of Understanding

Between

Chattanooga CARES, Inc. d/b/a **Cempa Community Care** and
Partnership Rape Crisis Center

The purpose of this Memorandum of Understanding (MOU) is to clarify agreements between Chattanooga CARES, Inc., d/b/a/ Cempa Community Care (Cempa) and Partnership Rape Crisis Center (Partner). These agreements form the referral from Partner to Cempa to provide comprehensive and integrated treatment. This MOU covers arrangements for HIV and hepatitis C testing, treatment, and primary care for low-income underinsured patients.

WHEREAS, Cempa provides primary care, testing, treatment, and educational services;

- Hepatitis C Testing & Treatment;
- HIV Testing & Treatment;
- Post-Exposure Prophylactic (PEP) treatment, if appropriate;
- Pre-Exposure Prophylactic (PrEP) HIV prevention treatment, if appropriate; and
- Primary Care, with a sliding fee schedule for low-income underinsured and uninsured clients

The parties agree to the responsibilities and proc. This MOU will be in effect/valid from the date of the MOU until the earlier of the following occurs: 1) either party provides the other party with 30 days advance written notice if its desire to terminate this MOU; or 2) funding is no longer available for any program affected by this MOU. Changes to this MOU may only be made with the prior written consent of both parties.

The parties agree that the following Terms and Conditions shall be a part of this MOU.

No Compensation. The parties have freely negotiated the terms of this MOU and neither has offered or received any inducement or other consideration from another party for entering into this MOU. No compensation is contemplated or intended under this MOU. No consideration under this MOU is determined in a manner that takes into account the volume or value of any referrals or business otherwise generated between the parties for which payment may be made in whole or in part under a federal or state healthcare program.

Assignment. This MOU may not be assigned by either party, without the written consent of the other party.

Other Acceptable Forms of this Document. The following shall have the same legal effect as an original of this document: facsimile copy, imaged copy, scanned copy, or an electronic



06

**PEP
OUTREACH**



PEP OUTREACH



Don't miss an opportunity to mention PEP in all your outreach programs.



When talking about PrEP, always include PEP education.



If developing a PrEP billboard, find a way to include PEP



Get the word out to the community about PEP!



On your website: Develop a page exclusively for PEP that both clients and providers can access for information.

LIFTING PEP OUT FROM UNDER THE RUG

Outreach: Use PEP as an education TOOL to introduce PrEP

Many people don't think or believe they are at risk for contracting HIV and therefore may not feel they are candidates for PrEP.

An effective method for sexual health educational outreach to women:

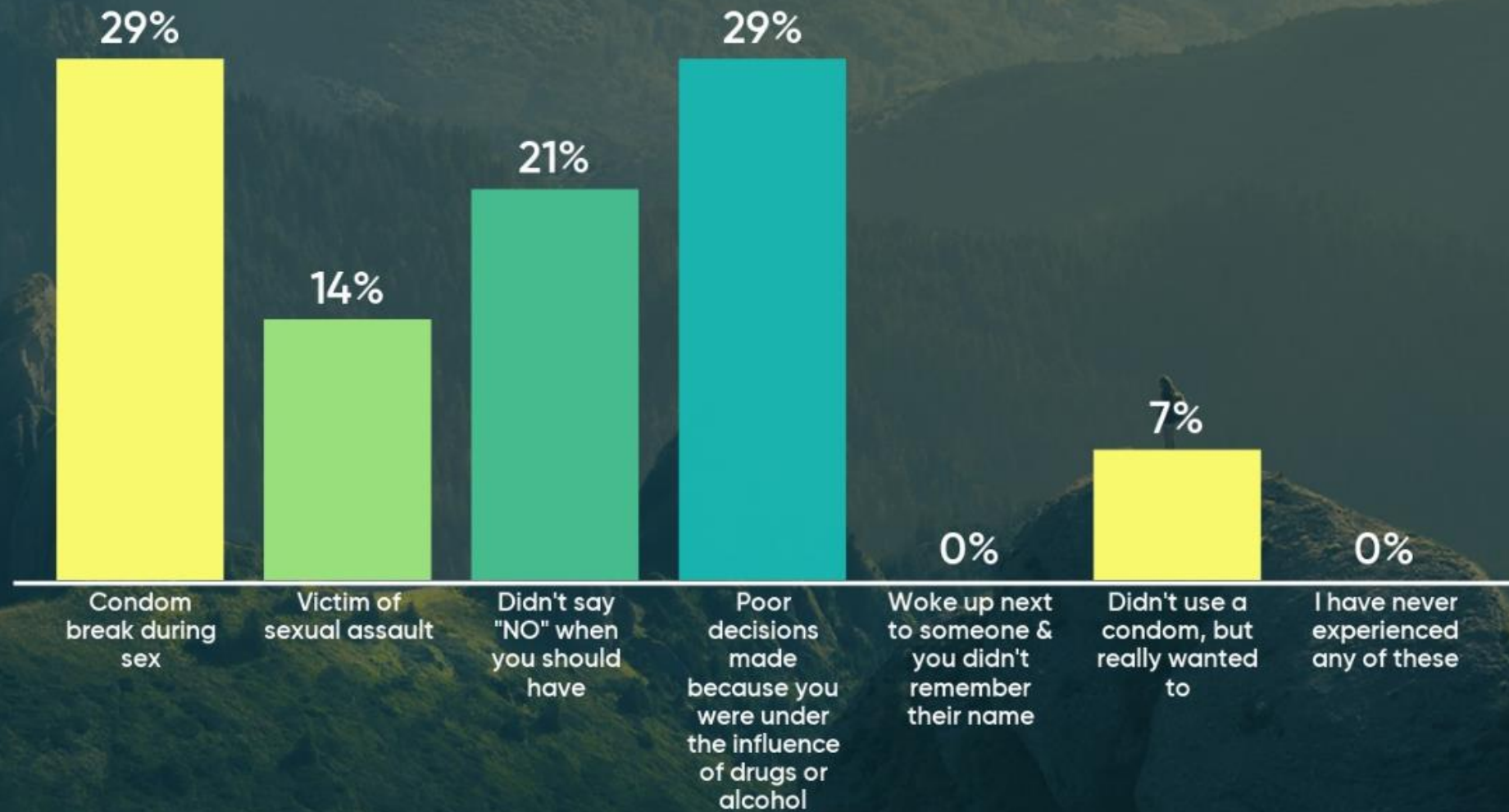
- Talk about PEP, outline its basic use and protocol
- Inform that PEP is there if anyone has a potential exposure to HIV. (Victims of Sexual Assault, Rape, Condom Break, Failed Condom Use Negotiation, etc.)
- Then discuss the potential for long term HIV protection – PrEP.



This method is an excellent way to de-stigmatize PrEP



As difficult as this may be for you, can you relate to any of the following: (You may choose more than one)



LIFTING PEP OUT FROM UNDER THE RUG

Outreach: Use PEP as an education TOOL to introduce PrEP

Many people don't think or believe they are at risk for contracting HIV and therefore may not feel they are candidates for PrEP.

An effective method for sexual health educational outreach to women:

- Talk about PEP, outline its basic use and protocol
- Inform that PEP is there if anyone has a potential exposure to HIV. (Victims of Sexual Assault, Rape, Condom Break, Failed Condom Use Negotiation, etc.)
- Then discuss the potential for long term HIV protection – PrEP.



This method is an excellent way to de-stigmatize PrEP





07

**PEP
TO
PrEP**



PROGRAM SUCCESS

PEP Protocol Program was initiated with Rape Crisis Center in 2019.



Starter Kit distribution program commenced in December 2021.
83 Kits issued as of April 2023



PEP TREATMENT NOW BEGINS IMMEDIATELY (IF CRITERIA ARE MET)

ZERO INCIDENCE OF HIV TRANSMISSION



PEP Navigator is available or on call 24/7 to assist or answer questions / schedule clinic appointments.



Clients are scheduled a provider visit at our clinic on same day, or the next available work day.



5 PEP Starter Kits initially provided to the center and are re-stocked monthly, or as needed.



72% of those provided with a Starter Kit, followed up at our clinic for continuation of the 28 day PEP treatment.



Cempa's In House pharmacy can dispense 25 pills from a 30 pill bottle for remainder of PEP treatment, allowing 5 pills per bottle to help sustain the Starter Kit program.



44% of those that were provided a Starter Kit decided to take PrEP following completion of their PEP treatment.



PEP TO PrEP CONTINUUM



100%

Kits Provided



72%

Continued Treatment



44%

Started on PrEP

PrEP & PEP – CISGENDER WOMEN

PrEP outreach program towards cisgender women was initiated in 2017.



Issues observed:

- Women didn't feel or relate to considering that they were at risk for HIV.
- Their levels of anxiety surrounding HIV was low.
- They felt like PrEP wasn't right for them.

Between 2017 and 2019, PrEP uptake for women at our clinic was **1.5%** for the total number of PrEP starts.

PEP outreach programs began in 2019:



When discussing incidences in everyday lives where PEP could have been initiated, those HIV exposure threats suddenly became relatable and PrEP was then viewed as an empowering option for consideration.

Between 2019 and present, PrEP uptake for women at our clinic rose to **13%** for the total number of PrEP starts.





Cempa⁺
Community Care

PEP - The Rodney Dangerfield of HIV Prevention

Presentation Prepared By

Mario G. Forte, PrEP / PEP Navigator



cempa.org



423.226.1115



mforte@cempa.org